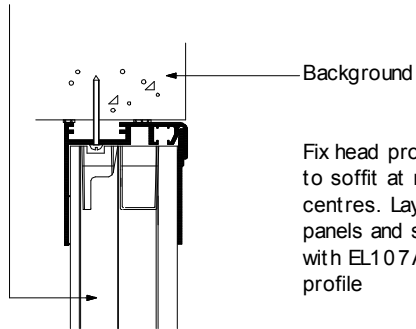


EVERBRIGHT ROOFING SYSTEMS

Everlite vertical E6 10 panel



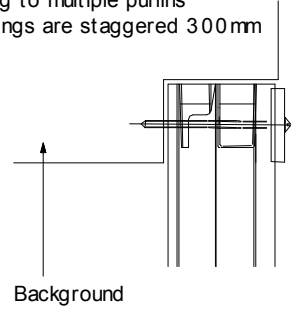
Background

Fix head profile EL107 to soffit at regular centres. Lay Everlite panels and secure with EL107A locking profile

HEAD

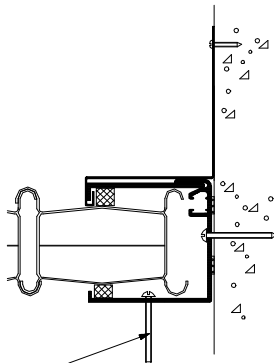
Fix Everlite to structure through clamping washer EL154 with EL158 self drill screws @ 600mm cts.

When fixing to multiple purlins ensure fixings are staggered 300mm



Background

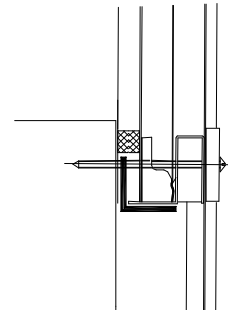
ALTERNATIVE



Alternative fixing position

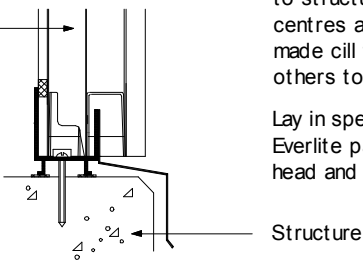
Fix jamb profile EL104 to supporting structure at regular centres. Lay Everlite panels and secure with EL104 locking profile. Flash with purpose made flashing as required

JAMB



Everlite vertical E6 10 panel.

Alternative: Everlite can be face fixed or sleeve bolted as shown



Structure

CILL

Fix cill profile EL101 to structure @ regular centres and fix purpose made cill flashing by others to face of profile.

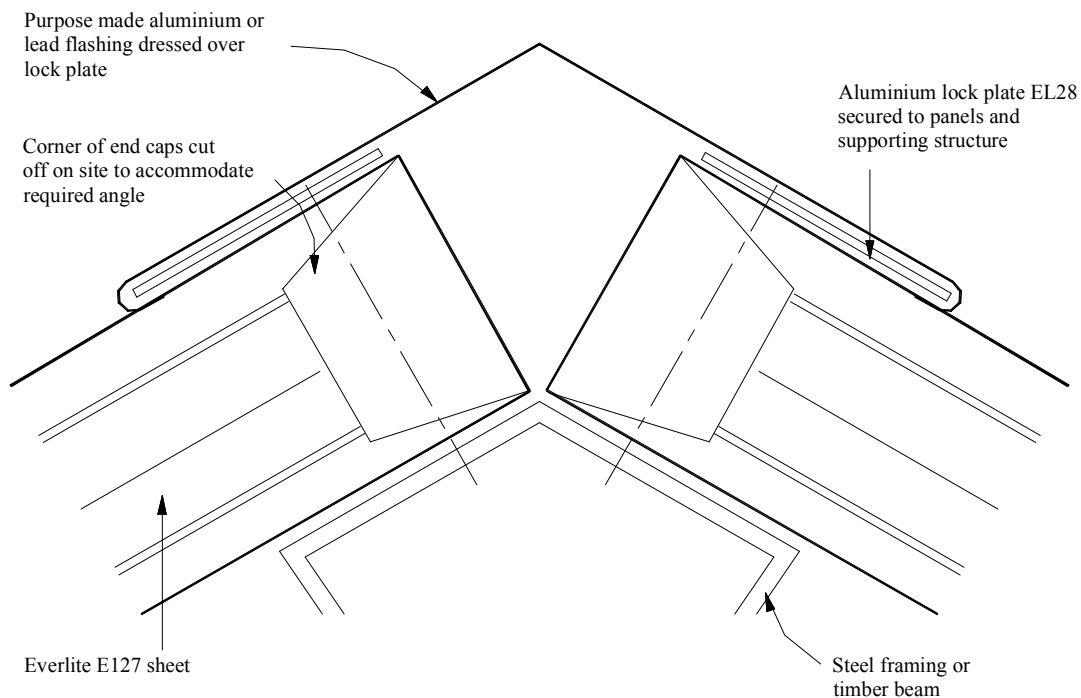
Lay in specially rebated Everlite panels and fix at head and jamb as shown

Fix Everlite to structure through clamping washer EL154 with EL158 self drill screws @ 600mm cts.

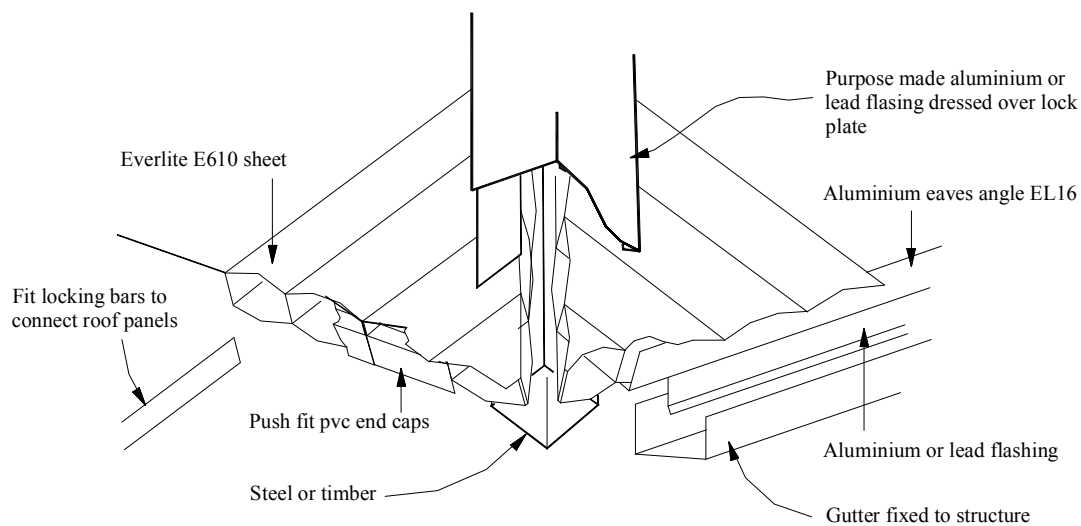
When fixing to multiple purlins ensure fixings are staggered 300mm

ALTERNATIVE

ASSEMBLY DETAIL



SECTION



3D ILLUSTRATION